

SCALE: 1" = 30'

CURVE	RADIUS	LENGTH	TANGENT	DELTA
C1	200.00'	34.91'	17.50'	10°00'00"
C2	200.00'	49.47'	24.86'	14°10'17"
C3	25.00'	39.27'	25.00'	90°00'00"
C4	200.00'	23.69'	11.86'	06°47'15"
C5	187.00'	33.86'	16.98'	10°22'33"
C6	187.00'	20.93'	10.47'	06°24'42"
C7	213.00'	44.85'	22.51'	12°03'51"
C8	35.00'	65.68'	47.75'	107°31'22"
C9	213.00'	7.83'	3.92'	2°06'26"

LINE	DIRECTION	DISTANCE
L1	N36°18'14"E	4.46'
L2	N77°26'40"W	6.92'
L3	N70°54'58"W	3.34'



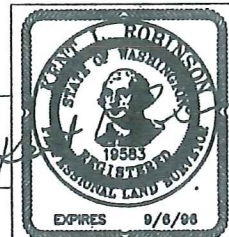
SEE SHEET 9 FOR EASEMENTS

AMBERLEIGHA PORTION OF SEC. 5 & 6, TWP. 27N., RGE. 5E., W.M.
CITY OF MILL CREEK SNOHOMISH COUNTY, WASHINGTON

93132

OSTERGAARD-ROBINSON
3630 COLBY AVE.
EVERETT, WA. 98201
(206) 259-6445

SHEET 4 OF 13



VOL. / PG.

A.F. NO. 9503.30.50.54

3/22/95

PLAT - 103

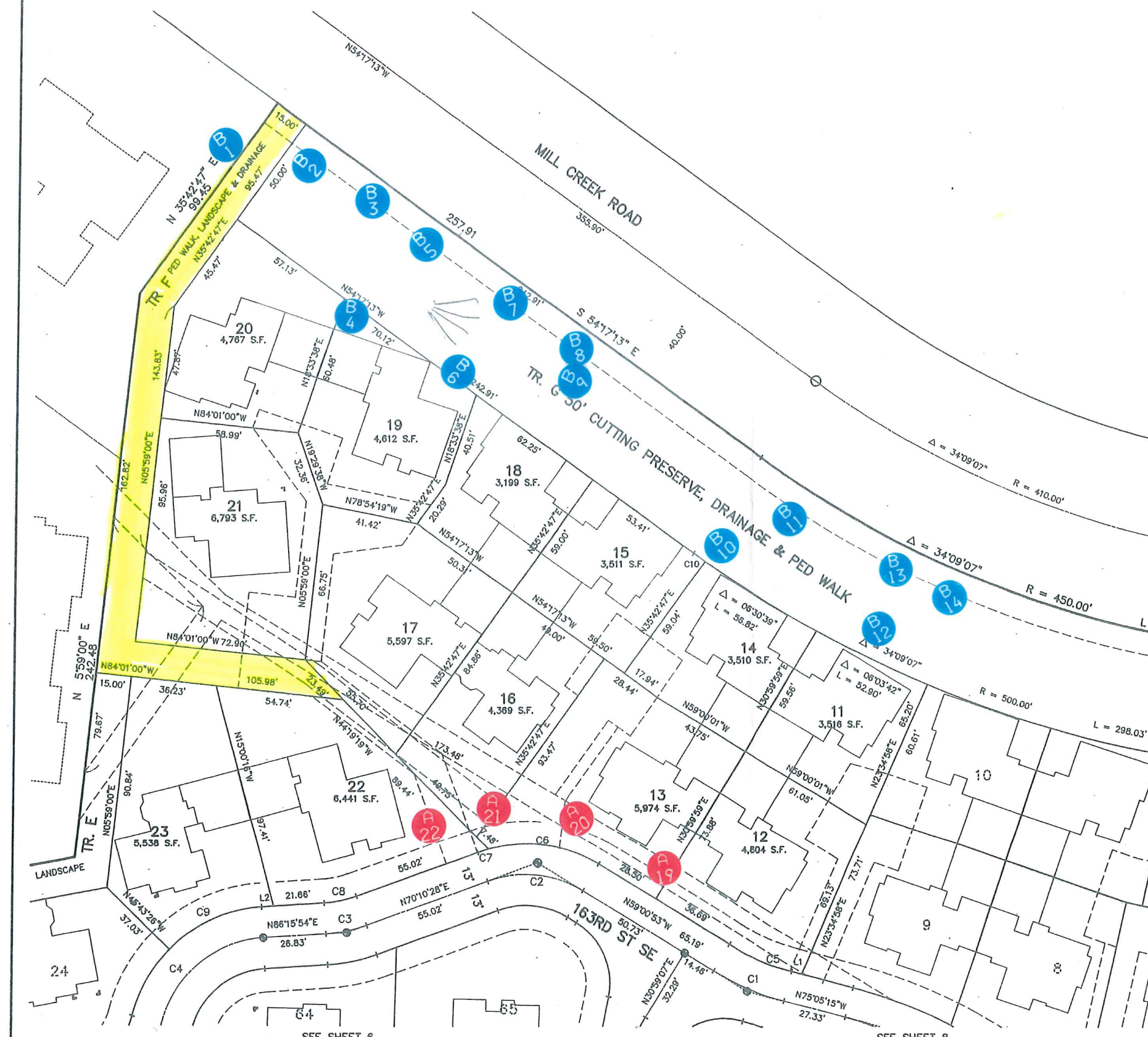


0 15' 30' 60'

SCALE: 1" = 30'

LINE	DIRECTION	DISTANCE
L1	N75°05'15"W	4.38'
L2	N86°15'54"E	5.17'

CURVE	RADIUS	LENGTH	TANGENT	DELTA
C1	118.00'	33.10'	16.66'	16°04'22"
C2	48.00'	42.57'	22.80'	50°48'39"
C3	63.00'	17.69'	8.90'	16°05'26"
C4	47.00'	69.73'	43.07'	85°00'00"
C5	105.00'	29.45'	14.82'	16°04'22"
C6	61.00'	49.23'	26.04'	46°14'11"
C7	61.00'	4.87'	2.44'	4°34'28"
C8	50.00'	14.04'	7.07'	16°05'26"
C9	60.00'	43.97'	23.03'	41°59'20"
C10	500.00'	6.09'	3.05'	0°41'54"



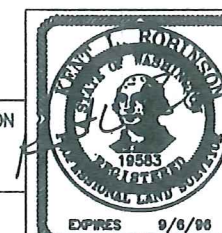
SEE SHEET 10 FOR EASEMENTS

AMBERLEIGHA PORTION OF SEC. 5 & 6, TWP. 27N., RGE. 5E., W.M.
CITY OF MILL CREEK SNOHOMISH COUNTY, WASHINGTON

JOB NO. 93132

OSTERGAARD-ROBINSON
3830 COLBY AVE.
EVERETT, WA. 98201
(206) 259-6445

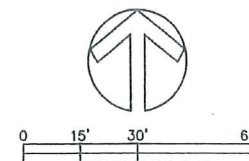
SHEET 5 OF 13



VOL./PG.

A.F. NO. 9503305004

3/22/95
PLAT - 104 93132FP/SHEETS(4V)



SCALE: 1" = 30'

LINE	DIRECTION	DISTANCE
L1	N01°15'54"E	24.86'
L2	N43°44'06"W	30.00'
L3	N01°15'54"E	3.93'
L4	N45°25'30"E	17.54'
L5	N06°15'54"E	7.69'
L6	N88°44'06"W	6.26'
L7	N85°42'47"W	2.91'
L8	N06°15'54"E	3.00'
L9	N84°55'46"W	9.10'

CURVE	RADIUS	LENGTH	TANGENT	DELTA
C1	200.00'	34.91'	17.50'	10°00'00"
C2	200.00'	49.47'	24.86'	14°10'17"
C3	200.00'	50.85'	25.56'	14°34'06"
C4	47.00'	8.20'	4.11'	10°00'00"
C5	33.00'	54.72'	36.01'	95°00'00"
C6	43.00'	71.30'	46.93'	95°00'00"
C7	47.00'	18.72'	9.48'	22°49'08"
C8	30.00'	31.42'	17.32'	60°00'00"
C9	30.00'	15.71'	8.04'	30°00'00"
C10	34.00'	13.54'	6.86'	22°49'08"
C11	56.00'	46.21'	24.51'	47°16'37"
C12	56.00'	46.64'	24.77'	47°43'23"
C13	46.00'	19.59'	9.95'	24°23'57"
C14	46.00'	10.30'	5.17'	12°49'41"
C15	20.00'	33.16'	21.83'	95°00'00"
C16	30.00'	49.74'	32.74'	95°00'00"
C17	60.00'	23.90'	12.11'	22°49'08"
C18	30.00'	41.89'	25.17'	80°00'00"
C19	187.00'	46.25'	23.24'	14°10'17"
C20	30.00'	49.26'	32.22'	94°04'45"
C21	187.00'	47.39'	23.82'	14°31'09"
C22	60.00'	10.47'	5.25'	10°00'00"
C23	25.00'	39.27'	25.00'	90°00'00"
C24	200.00'	14.59'	7.30'	04°10'47"
C25	200.00'	20.32'	10.17'	05°49'13"

AWDW = ALDERWOOD WATER EASEMENT

SEE SHEET 13 FOR EASEMENTS

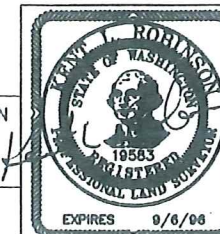
AMBERLEIGH

A PORTION OF SEC. 5 & 6, TWP. 27N., RGE. 5E., W.M.
CITY OF MILL CREEK SNOHOMISH COUNTY, WASHINGTON

JOB NO. 93132

OSTERGAARD-ROBINSON
3630 COLBY AVE.
EVERETT, WA. 98201
(206) 259-6445

SHEET 8 OF 13

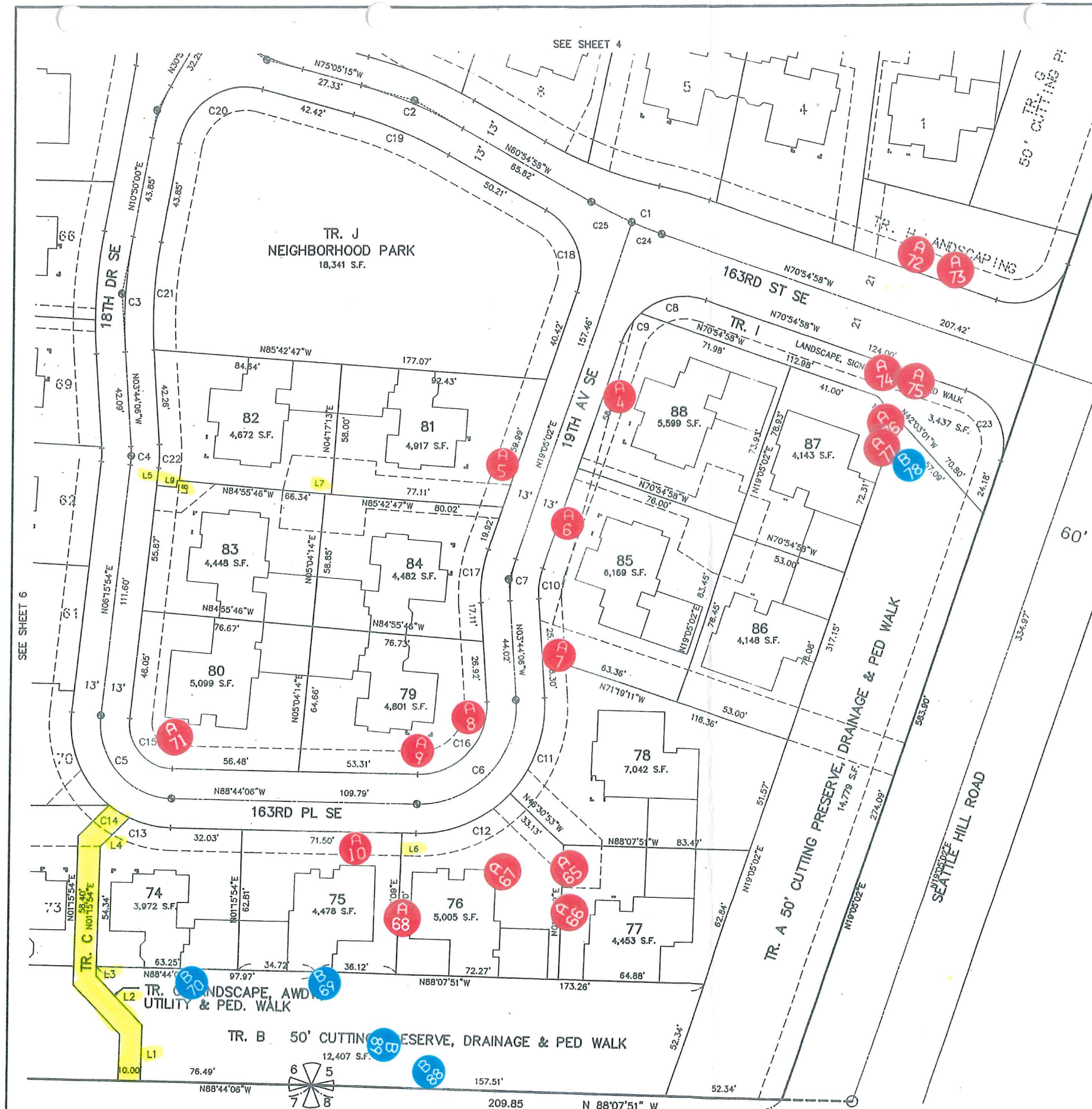


EXPIRES 9/6/08

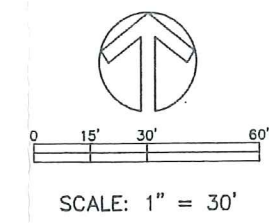
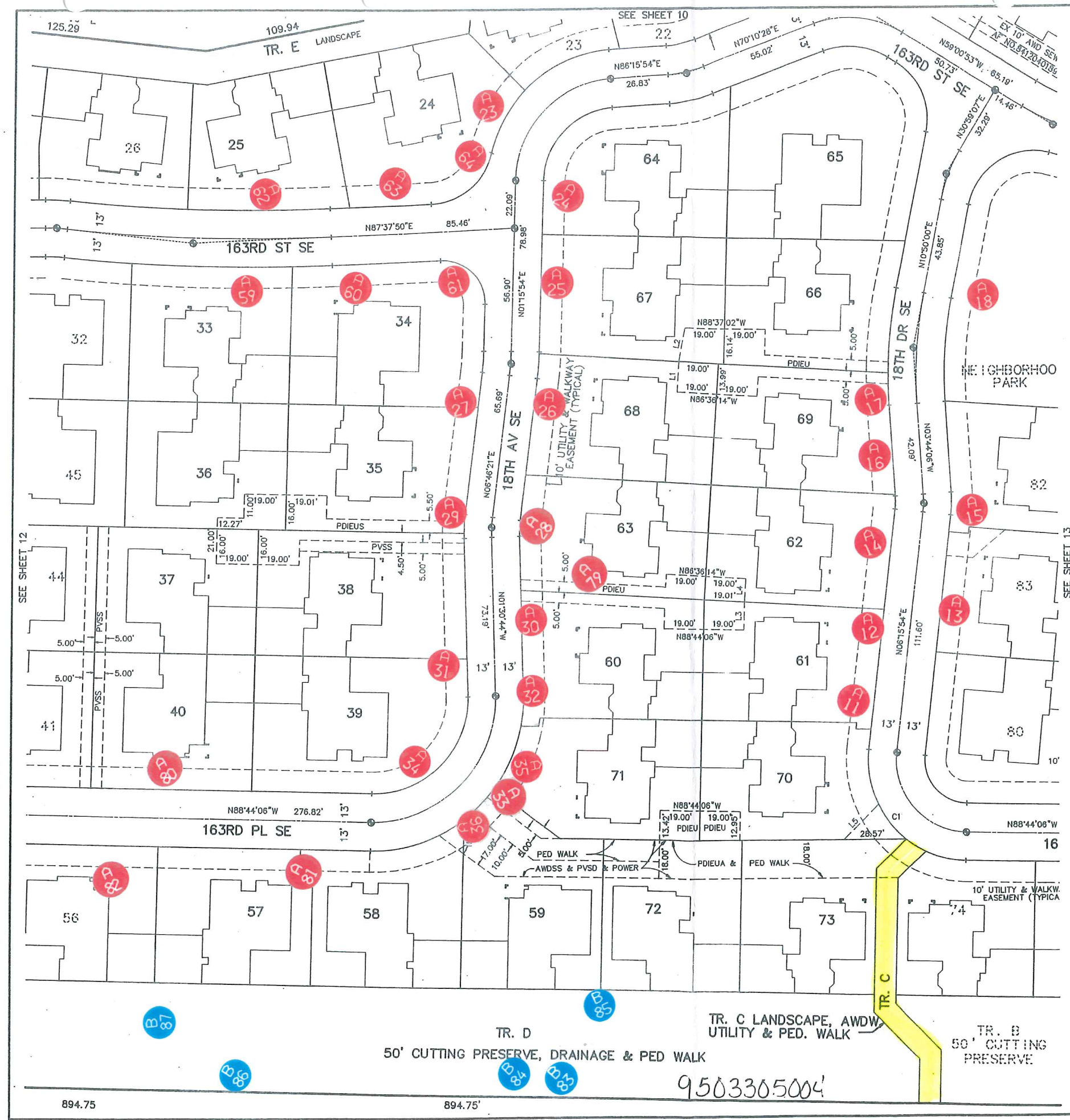
3/22/16

93132FP/SHEET8(6V)

PLAT- 107



A.F. NO. 9503305064



SCALE: 1" = 30'

LINE	DIRECTION	DISTANCE
L1	N03°23'46"E	13.99'
L2	N11°00'32"E	15.60'
L3	N01°15'54"E	12.86'
L4	N03°19'39"E	11.00'
L5	N45°25'30"E	22.39'

CURVE	RADIUS	LENGTH	TANGENT	DELTA
C1	46.00'	20.26'	10.30'	25°14'17"

NOTE:
THE EASEMENTS HEREBY GRANTED TO ALDERWOOD WATER DISTRICT SHALL REMAIN FREE FROM ALL STRUCTURES, SUCH AS COVERED PARKING, DECKS, OVERHANGS, SHEDS, ETC. AND ACCESS SHALL REMAIN UNOBSTRUCTED BY FENCES.

LEGEND

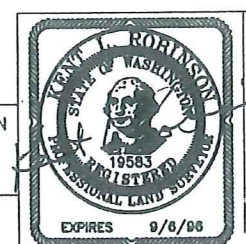
- PDIEU = PRIVATE DRIVE INGRESS, EGRESS AND UTILITY EASEMENT
- PDIEUS = PRIVATE DRIVE INGRESS, EGRESS AND UTILITY EASEMENT AND PRIVATE SIDE SEWER
- AWDSS = ALDERWOOD SANITARY SEWER ESMT
- AWDW = ALDERWOOD WATER ESMT
- PED WALK = PEDESTRIAN ACCESS WALKWAY EASEMENT
- PVSD = PRIVATE STORM DRAINAGE ESMT
- PVSS = PRIVATE SIDE SEWER ESMT

A.F. NO.

AMBERLEIGH

A PORTION OF SEC. 5 & 6, TWP. 27N., RGE. 5E., W.M.
CITY OF MILL CREEK SNOHOMISH COUNTY, WASHINGTON

JOB NO. 93132
OSTERGAARD-ROBINSON
3630 COLBY AVE.
EVERETT, WA. 98201
(206) 259-6445



SHEET 11 OF 13

VOL./PG.

TR. D
50' CUTTING PRESERVE, DRAINAGE & PED WALK

TR. C LANDSCAPE, AWDW
UTILITY & PED. WALK

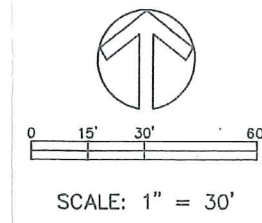
TR. B
50' CUTTING PRESERVE

9503305004

894.75

894.75'

3/22/96 93132F
PLAT-110



LINE	DIRECTION	DISTANCE
L1	N88°44'06"W	15.00'
L2	N01°15'54"E	27.85'
L3	N88°44'06"W	2.25'
L4	N44°08'00"E	31.35'
L5	N01°15'54"E	7.00'
L6	N88°44'06"W	5.00'
L7	N88°34'48"E	3.05'
L8	N22°00'00"E	9.08'

CURVE	RADIUS	LENGTH	TANGENT	DELTA
C1	847.82'	122.66'	61.44'	08°17'22"
C2	92.00'	10.18'	5.10'	06°20'24"
C3	43.00'	50.72'	28.78'	67°34'48"
C4	113.00'	48.46'	24.61'	24°34'20"
C5	33.00'	49.63'	30.86'	86°09'46"
C6	834.82'	54.76'	27.39'	03°45'30"
C7	105.00'	11.62'	5.82'	06°20'24"
C8	56.00'	24.02'	12.20'	24°34'45"
C9	56.00'	33.60'	17.32'	34°22'31"
C10	126.00'	36.59'	18.43'	16°38'25"
C11	126.00'	17.44'	8.74'	7°55'55"
C12	46.00'	47.26'	25.95'	58°51'34"
C13	46.00'	21.92'	11.17'	27°18'12"
C14	20.00'	30.08'	18.70'	86°09'46"
C15	100.00'	16.04'	8.04'	09°11'23"
C16	100.00'	26.85'	13.50'	15°22'57"
C17	30.00'	35.38'	20.08'	67°34'48"
C18	79.00'	8.74'	4.38'	06°20'24"
C19	860.82'	31.67'	15.84'	02°06'28"
C20	572.50'	63.28'	31.67'	06°20'00"
C21	572.50'	20.52'	10.26'	02°03'13"
C22	572.50'	42.76'	21.39'	04°16'47"
C23	56.00'	8.43'	4.22'	08°37'32"
C24	337.50'	20.91'	10.46'	03°33'00"

SEE SHEET 12 FOR EASEMENTS

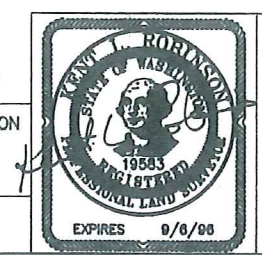
AMBERLEIGH

A PORTION OF SEC. 5 & 6, TWP. 27N., RGE. 5E., W.M.
CITY OF MILL CREEK SNOHOMISH COUNTY, WASHINGTON

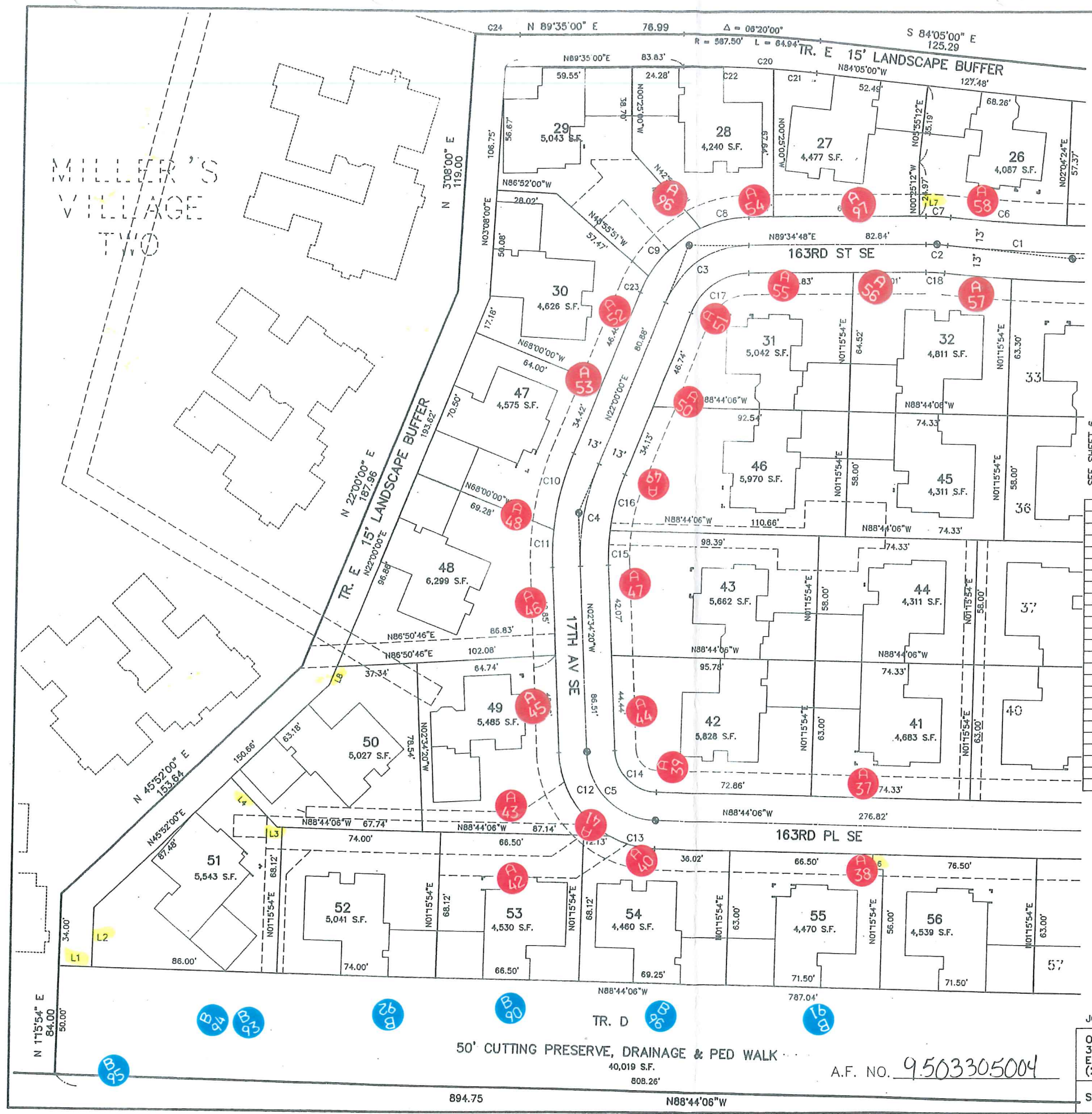
JOB NO. 93132

OSTERGAARD-ROBINSON
3630 COLBY AVE.
EVERETT, WA. 98201
(206) 259-6445

SHEET 7 OF 13



EXPIRES 8/6/98
3/22/95 03172ED /SHEET 7/13
PLAT-106



MILLER'S
VILLAGE
TWO

50' CUTTING PRESERVE, DRAINAGE & PED WALK
40,019 S.F.
808.26'

A.F. NO. 9503305004

894.75

N88°44'06"W